

# Sinekološka STEM EDUKAcija u Klinči

Program rada s nadarenima

Radionica 3.6.1.(6. i 8. raz. OŠ)

„Je li moguć život u vodi s pokretnim sedimentima?“

Datum održavanja:

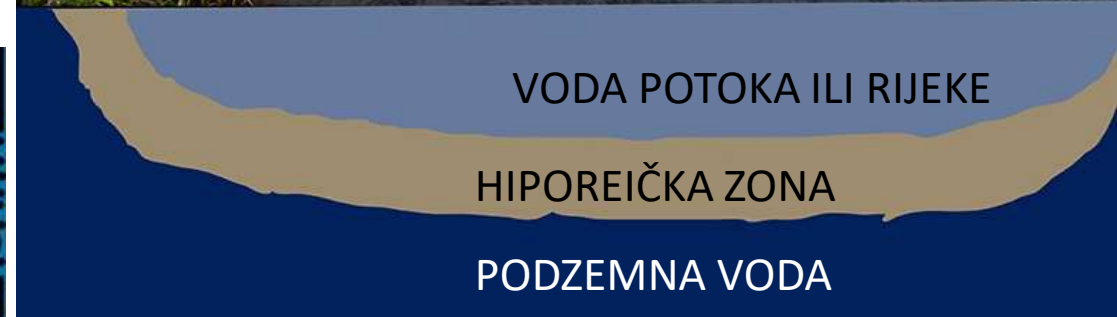
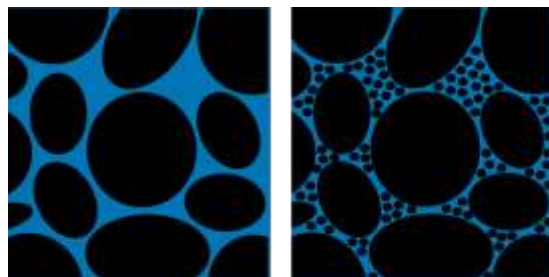
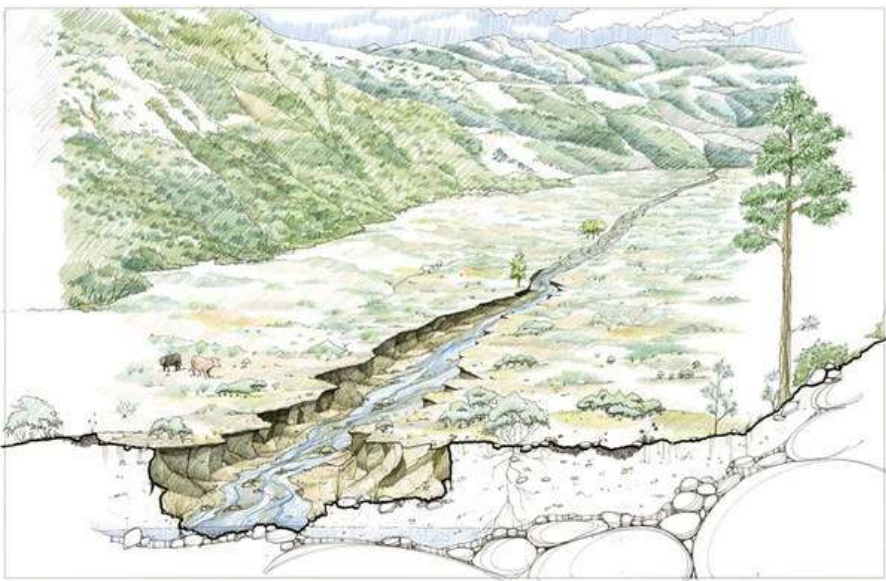
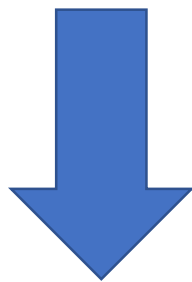
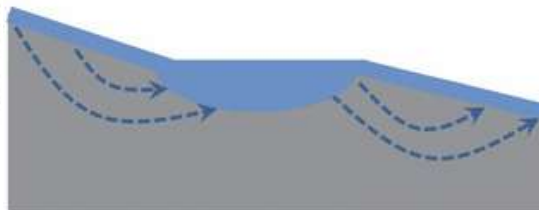
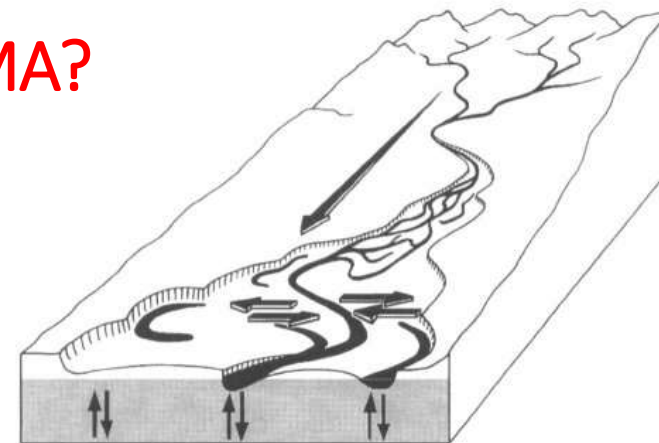
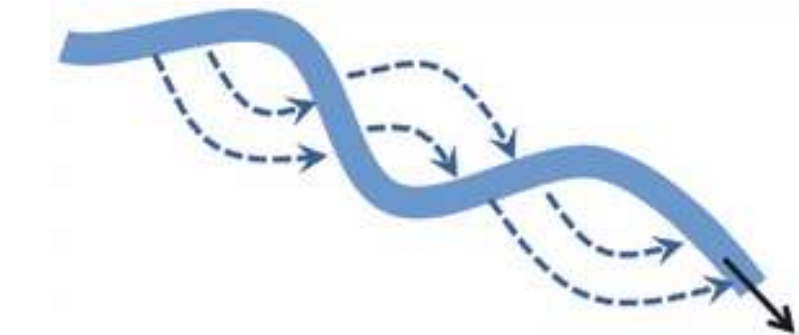
01.02.2023.

Prof. dr. sc. Sanja Gottstein

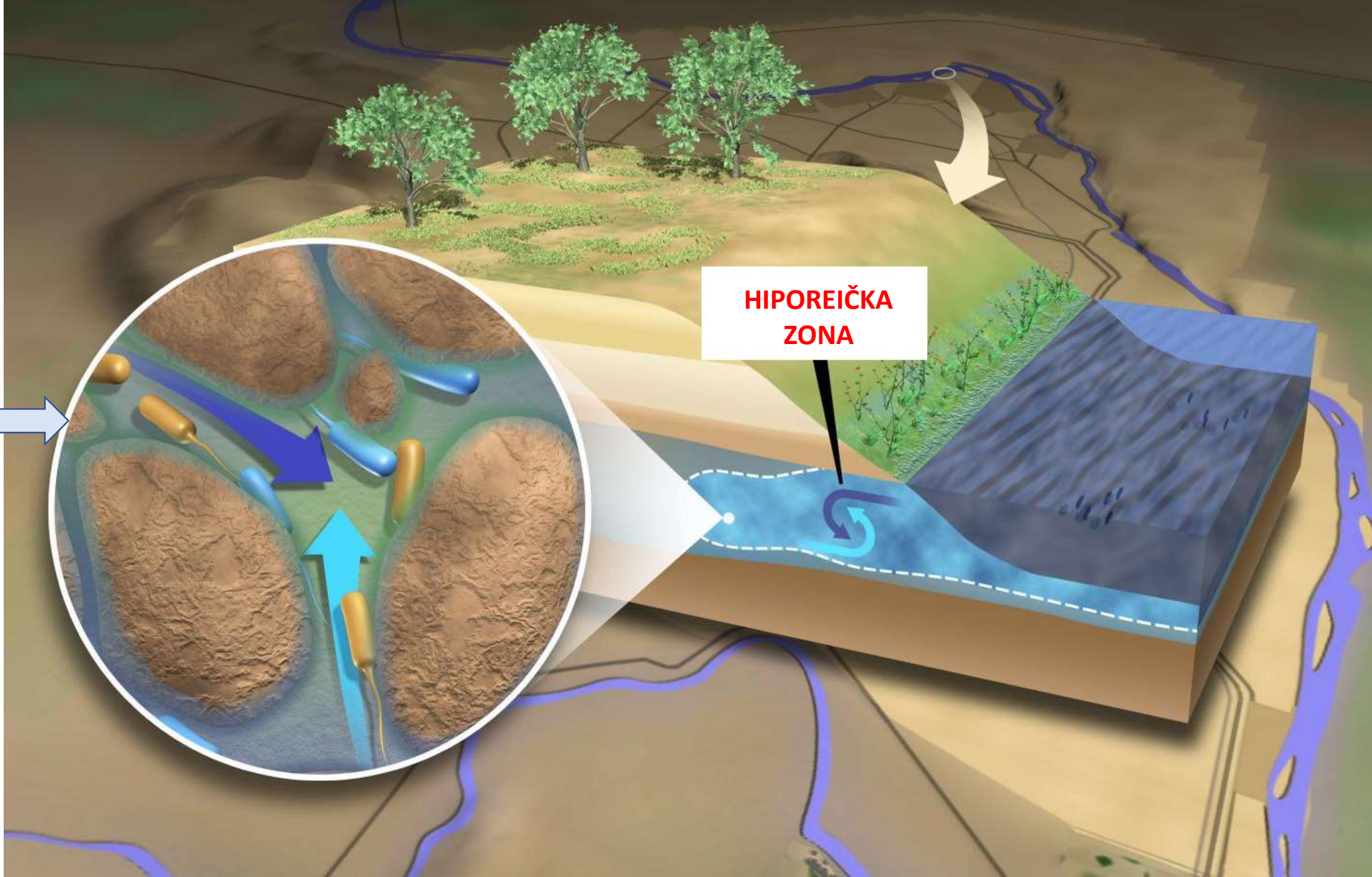


Projekt je sufinancirala Europska unija iz Europskog socijalnog fonda.  
Sadržaj materijala isključiva je odgovornost udruge EDUKA - Centar lokalnog razvoja.

# POZNAJETE LI VODENA STANIŠTA S POKRETNIM SEDIMENTIMA?

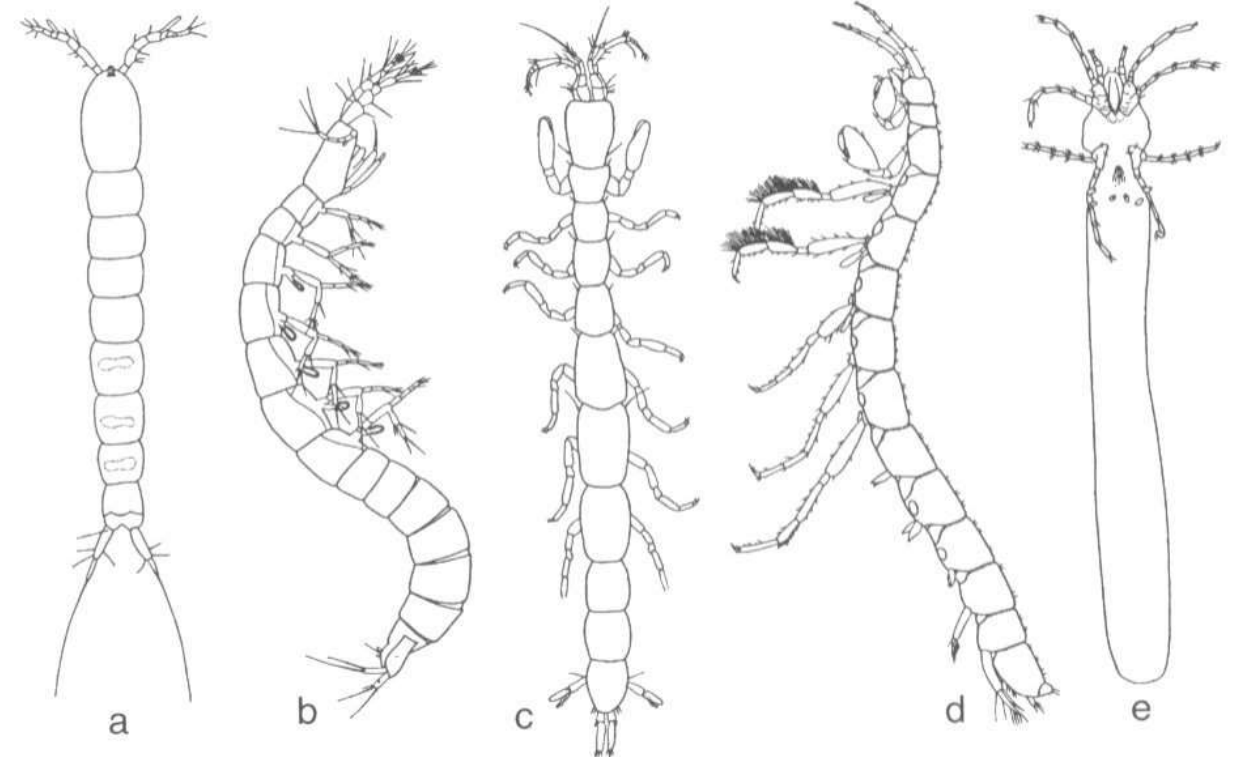
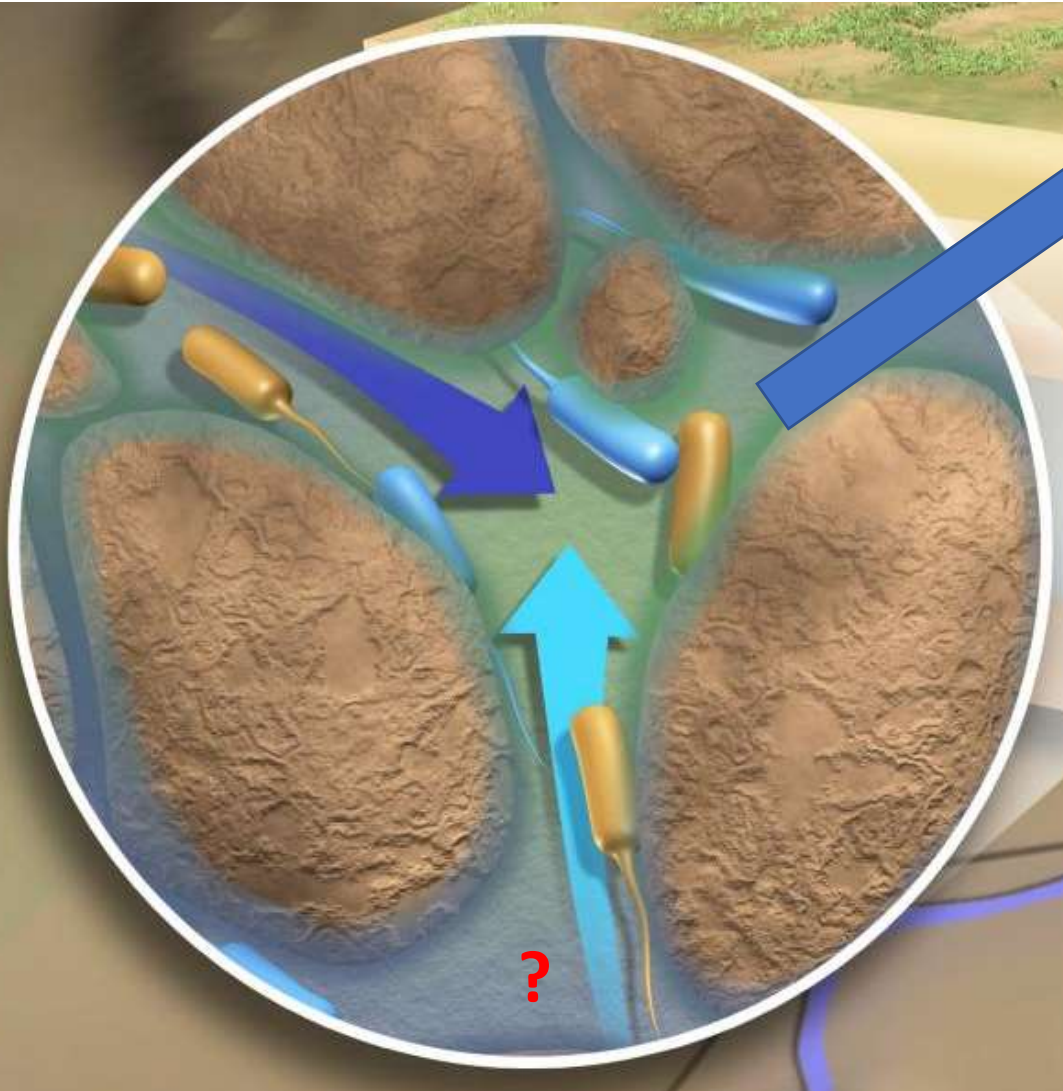
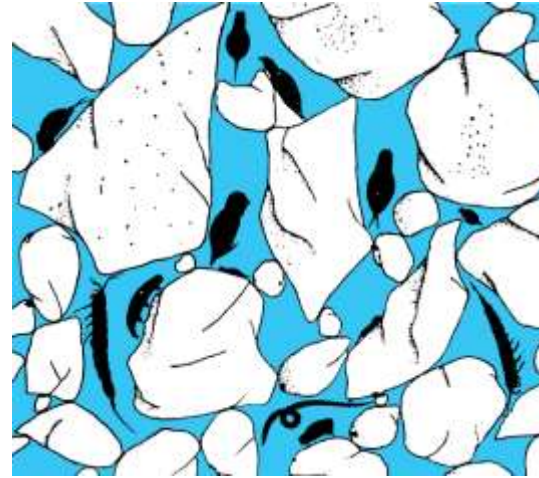
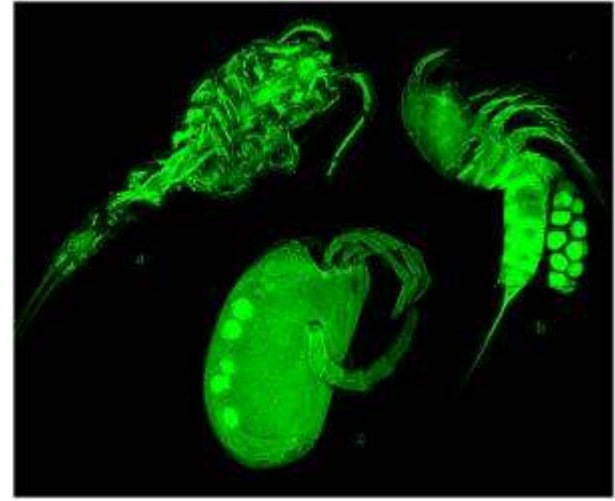


**POKRETNI SEDIMENTI ISPUJENI VODOM**

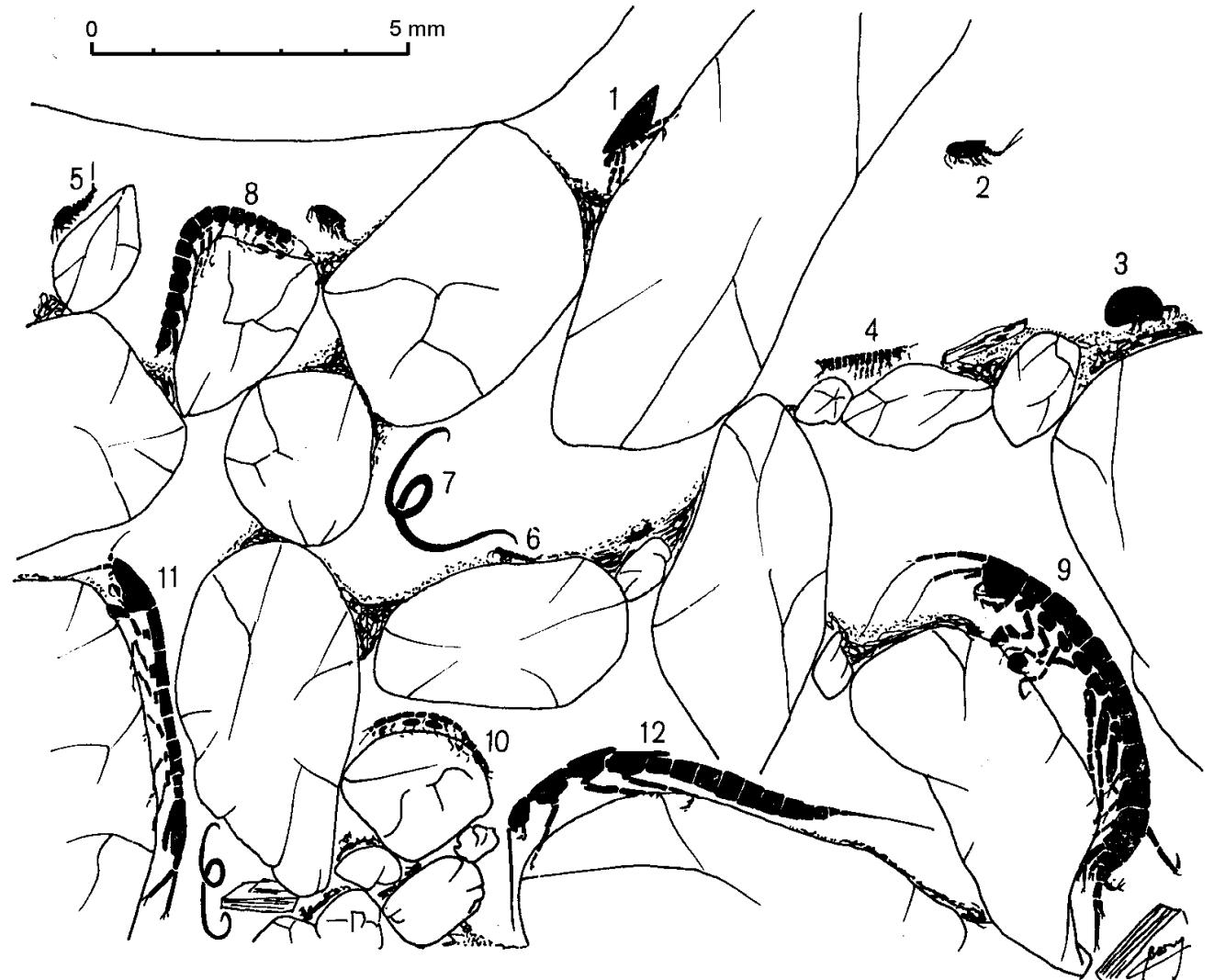
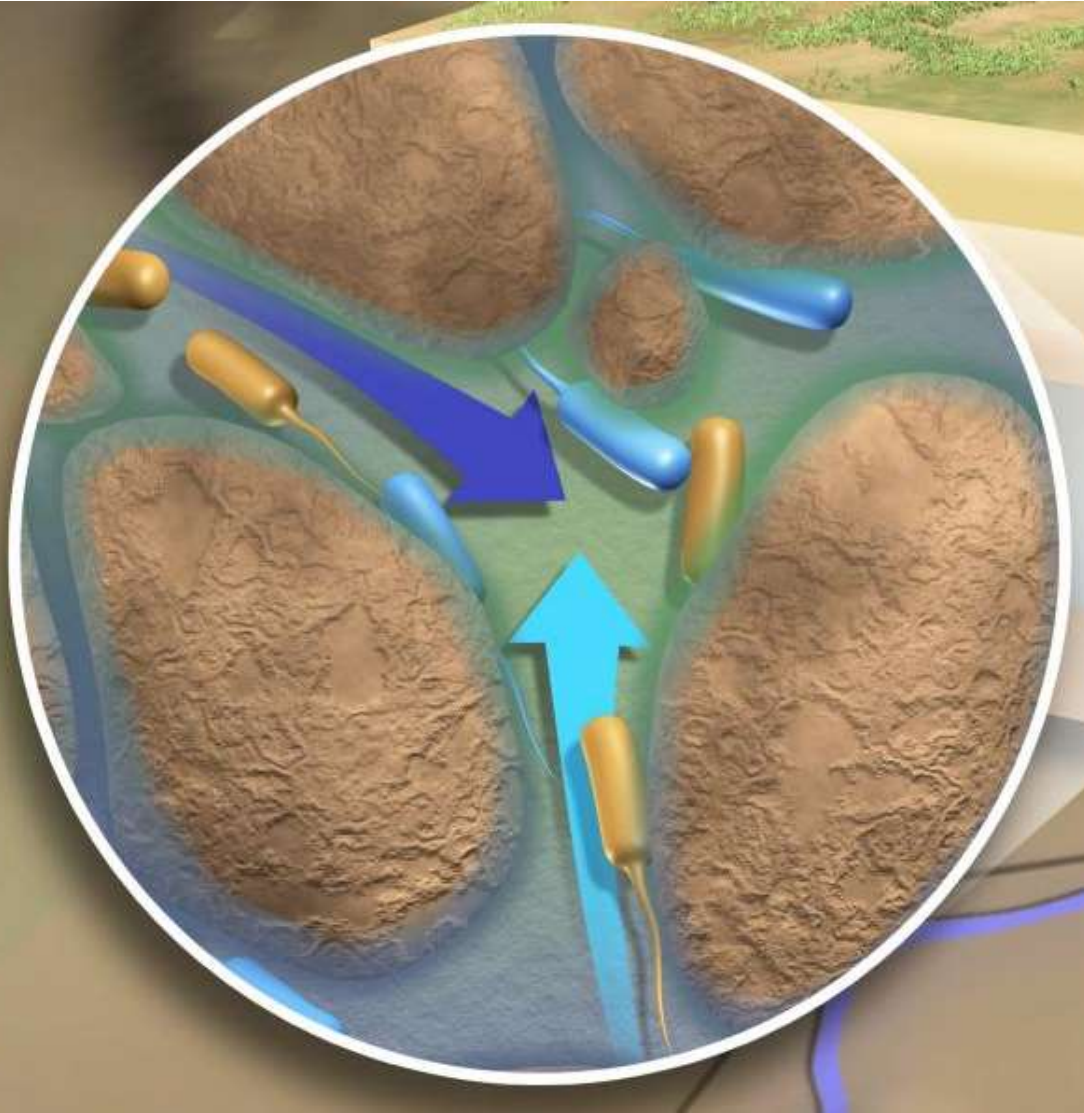


**HIPOREIČKA  
ZONA**

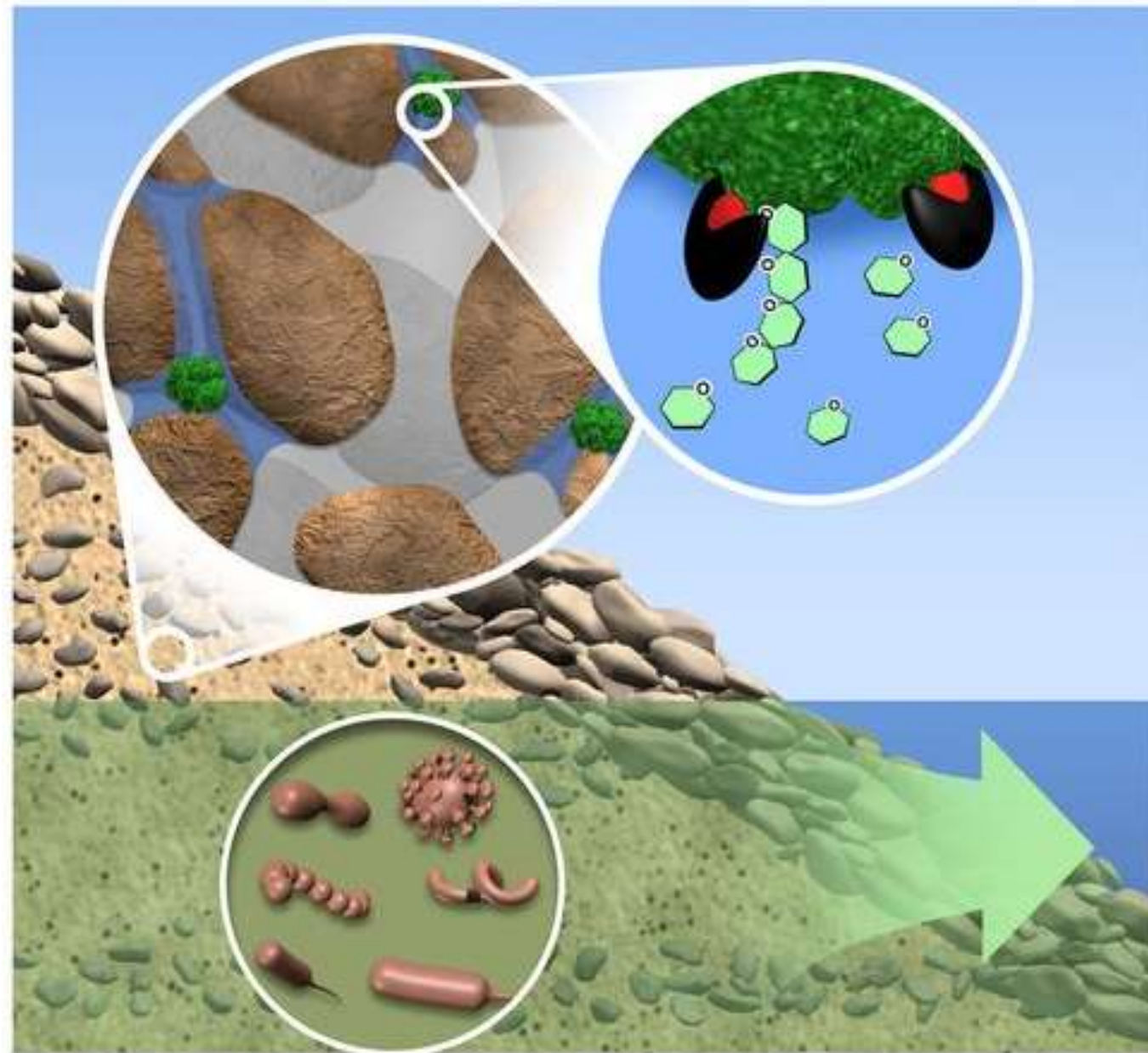
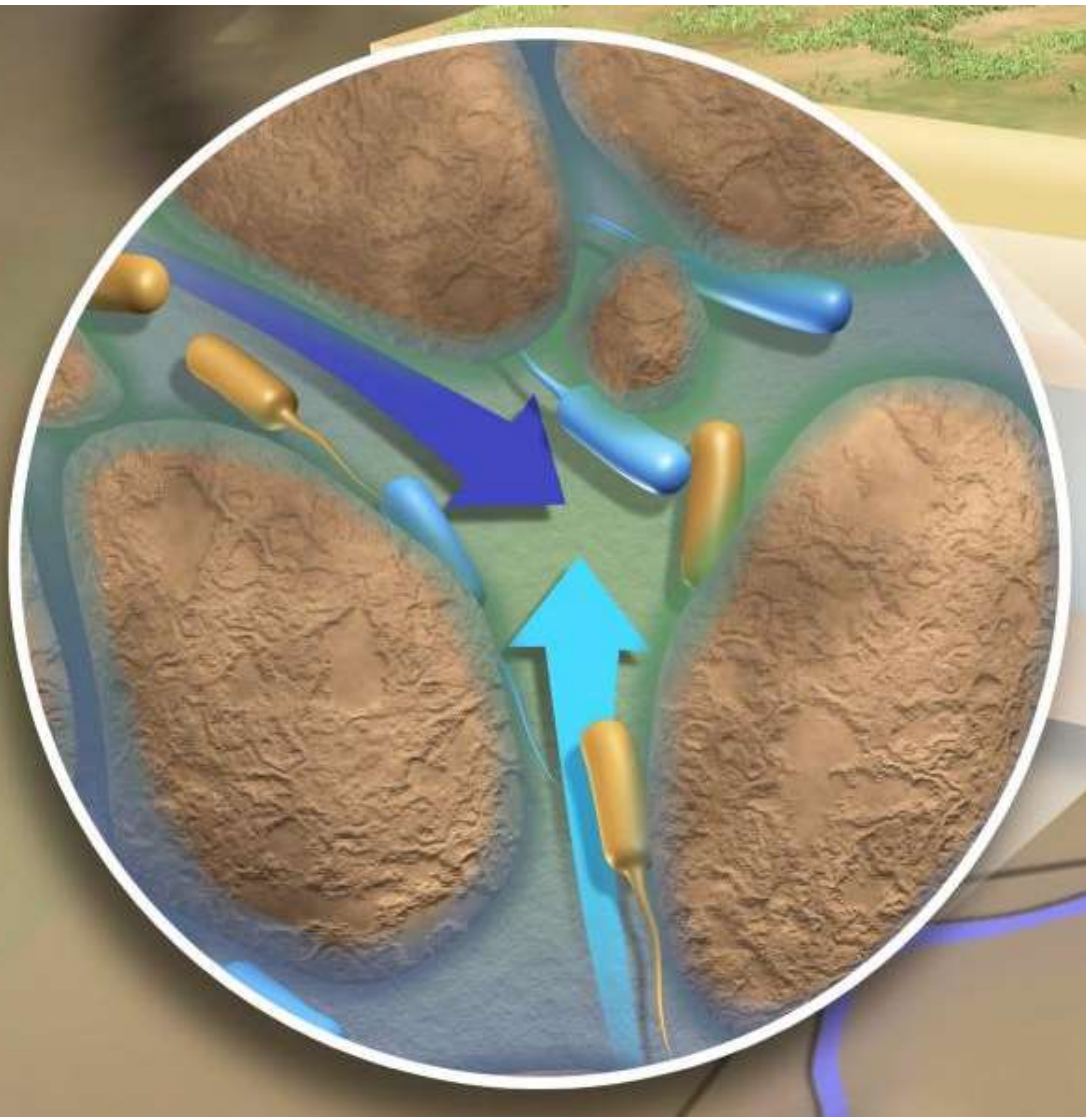
# JE LI MOGUĆ ŽIVOT U VODI IZMEĐU POKRETNIM SEDIMENATA?



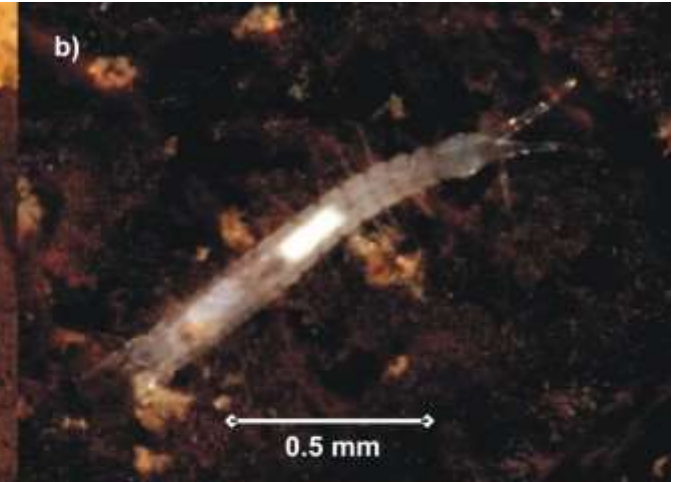
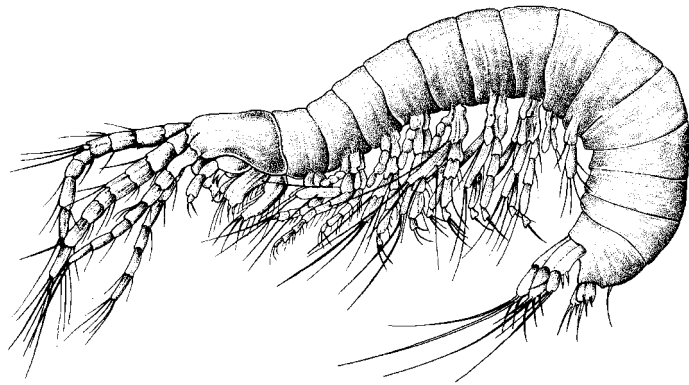
# PRILAGODBA ŽIVOTU U MEĐUPROSTORIMA POKRETNIH SEDIMENATA



# PREŽIVLJAVANJE U MEĐUPROSTORIMA POKRETNIH SEDIMENATA



# KAKO MOŽEMO ISTRAŽITI FAUNU U VODI POKRETNIH SEDIMENATA?



**RAKOVI**

# METODE ISTRAŽIVANJA VODE U POKRETNIM SEDIMENTIMA

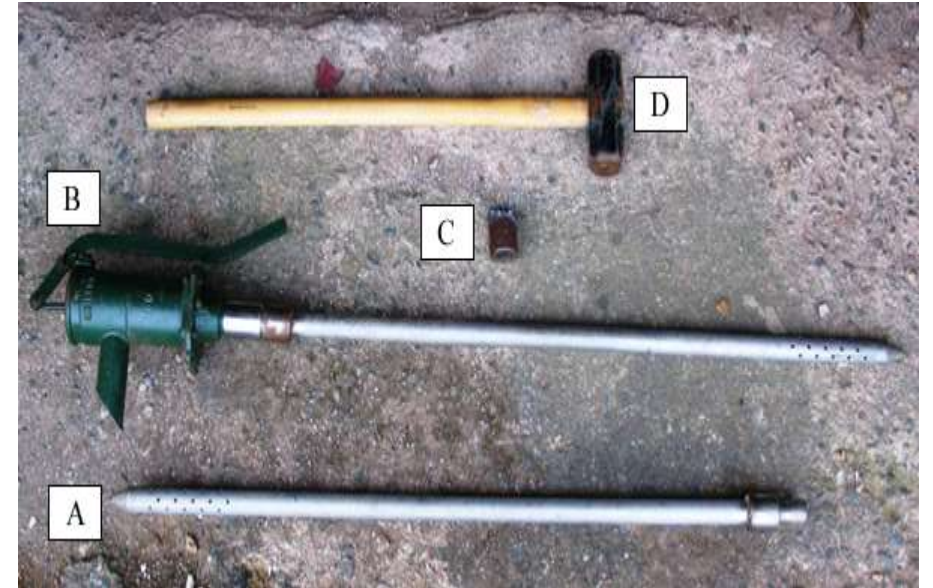
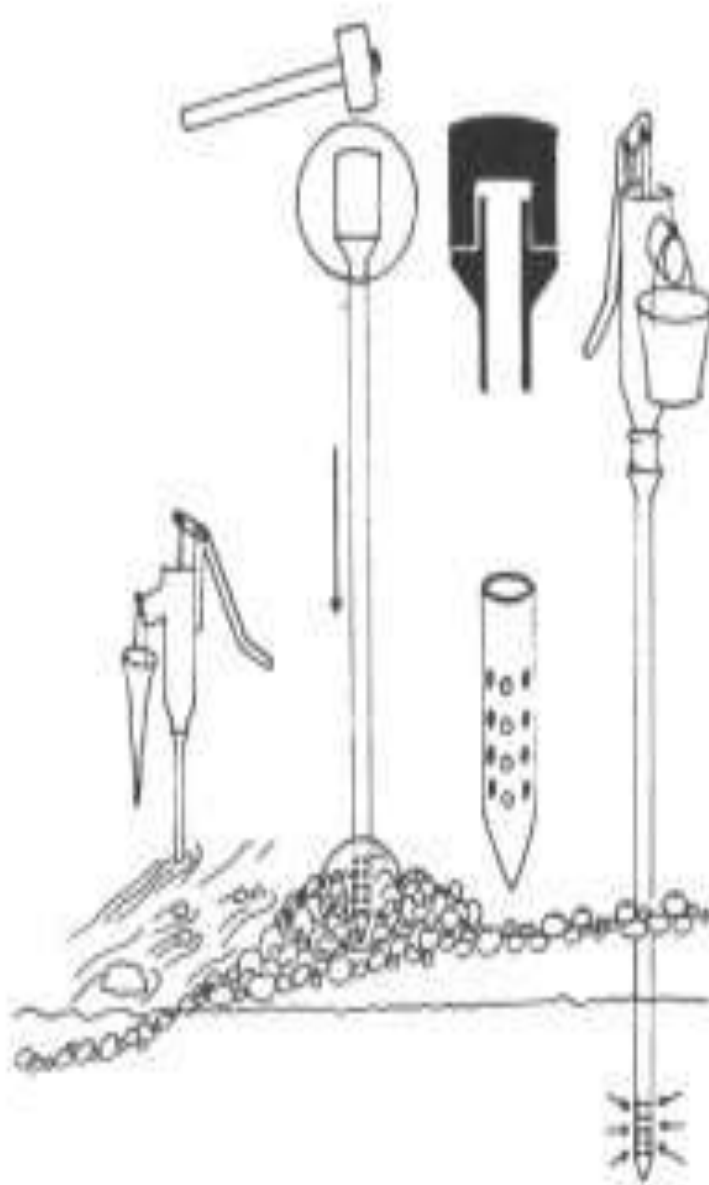
GDJE UZETI UZORAK?

- Hiporeička zona direktno ispod riječnog toka
- Hiporeička zona riječne obale





# Bou-Rouch pumpa



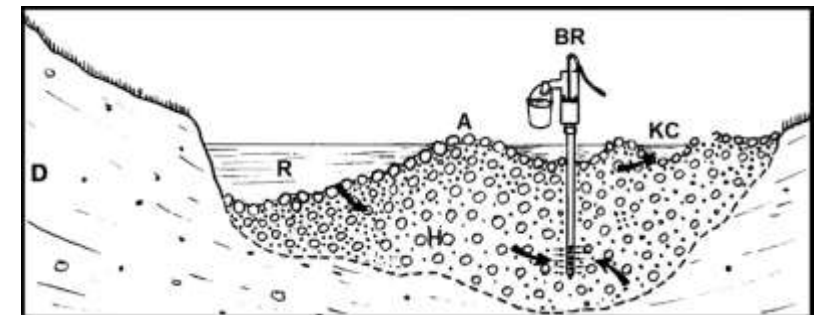
Dijelovi Bou-Rouch pumpe i dodatna oprema:

A: perforirana cijev.

B: pumpa pričvršćena na perforiranu cijev.

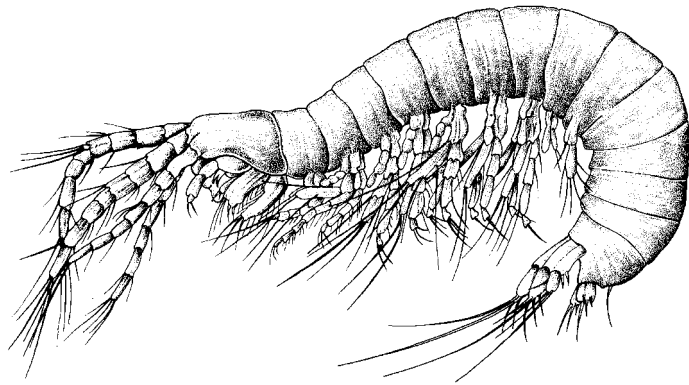
C: zaštitna kapa

D: čekić

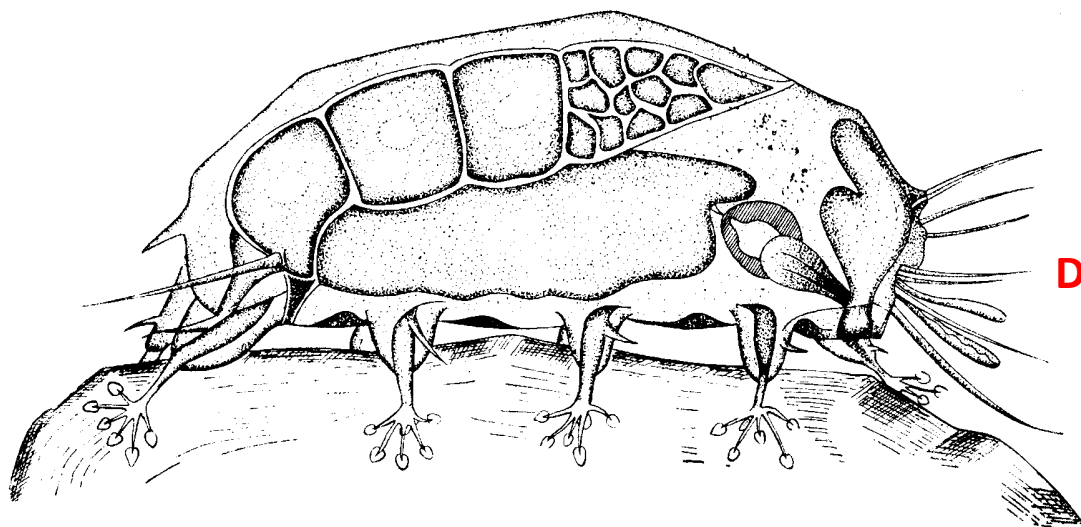




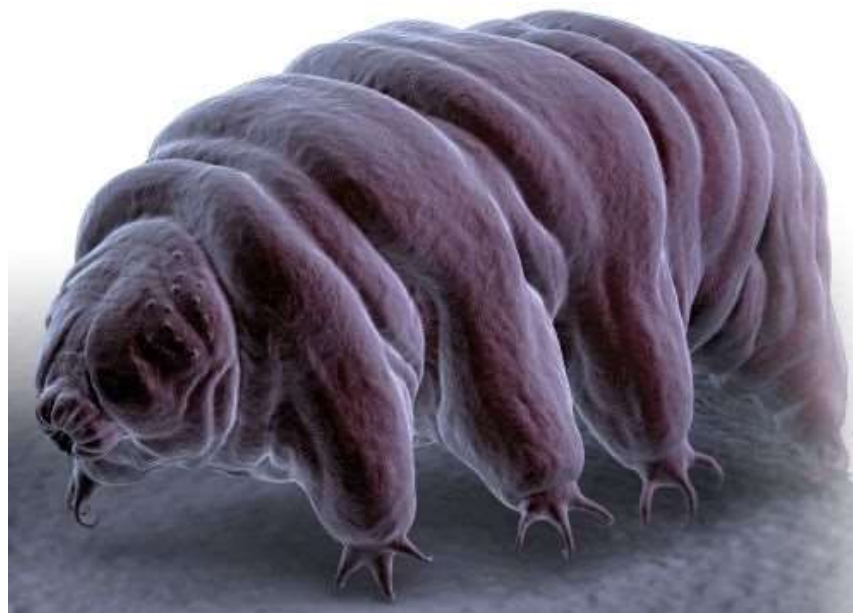
# KOJE PREDSTAVNIKE FAUNE MOŽEMO OČEKIVATI U POKERETNIM SEDIMENTIMA?



**RAKOVI SU NAJČEŠĆI**



**DUGOŽIVCI**



<https://vimeo.com/194274475>